



ADAPTIVE GRIPPERS



HAND-E



2F-85



2F-140

EASY TO USE

- Built for Universal Robots
 - Plug + Play
- Free programming software

VERSATILE

- 3 wide stroke options
- Multiple grip modes
- Built-in position feedback

SUIT INDUSTRIAL NEEDS

- Fast and strong
- Precise and durable
- Part validation



Pick and Place



Assembly

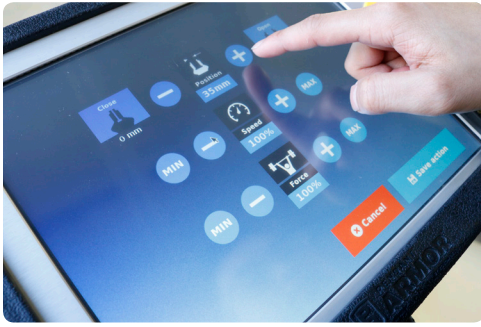


Quality Testing



Machine Tending

START PRODUCTION FASTER



TAKE FULL CONTROL

ADJUST THE GRIPPER'S POSITION, SPEED, AND FORCE FOR A PERFECT GRASP



USE A DUAL-GRIPPER COMBO

REDUCE CYCLE TIME BY ADDING MULTIPLE GRIPPERS ON THE SAME ROBOT

SPECIFICATIONS	Hand-E	2F-85	2F-140
Stroke (programmable)	50 mm	85 mm	140 mm
Grip force (programmable)	60 to 130 N	20 to 235 N	10 to 125 N
Form-fit grip payload	5 kg	5 kg	2.5 kg
Friction grip payload	3 kg	5 kg	2.5 kg
Gripper mass	1 kg	0.9 kg	1 kg
Position resolution (fingertip)	0.2 mm	0.4 mm	0.6 mm
Closing speed (programmable)	20 to 150 mm/s	20 to 150 mm/s	30 to 250 mm/s
Communication protocol	Modbus RTU (RS-485)		
Communication protocol options (with external controller)	Ethernet/IP, Modbus TCP, PROFINET, DeviceNet, CANopen, EtherCAT		

* All specifications are provided for reference only. See User Manual at support.robotiq.com for official specifications

WHAT'S NEXT?

Get access to the Adaptive Grippers specifications at
support.robotiq.com

Chat with the Robotiq sales team:
iss@robotiq.com
1-888-ROBOTIQ

Place your contact information here



Updated August 2018
robotiq.com